

SILCOTEC EUROPE



A **Volex** Company

# Silcotec Europe Overview

2021

CONNECTING CRITICAL TECHNOLOGY



# Silcotec Europe introduction

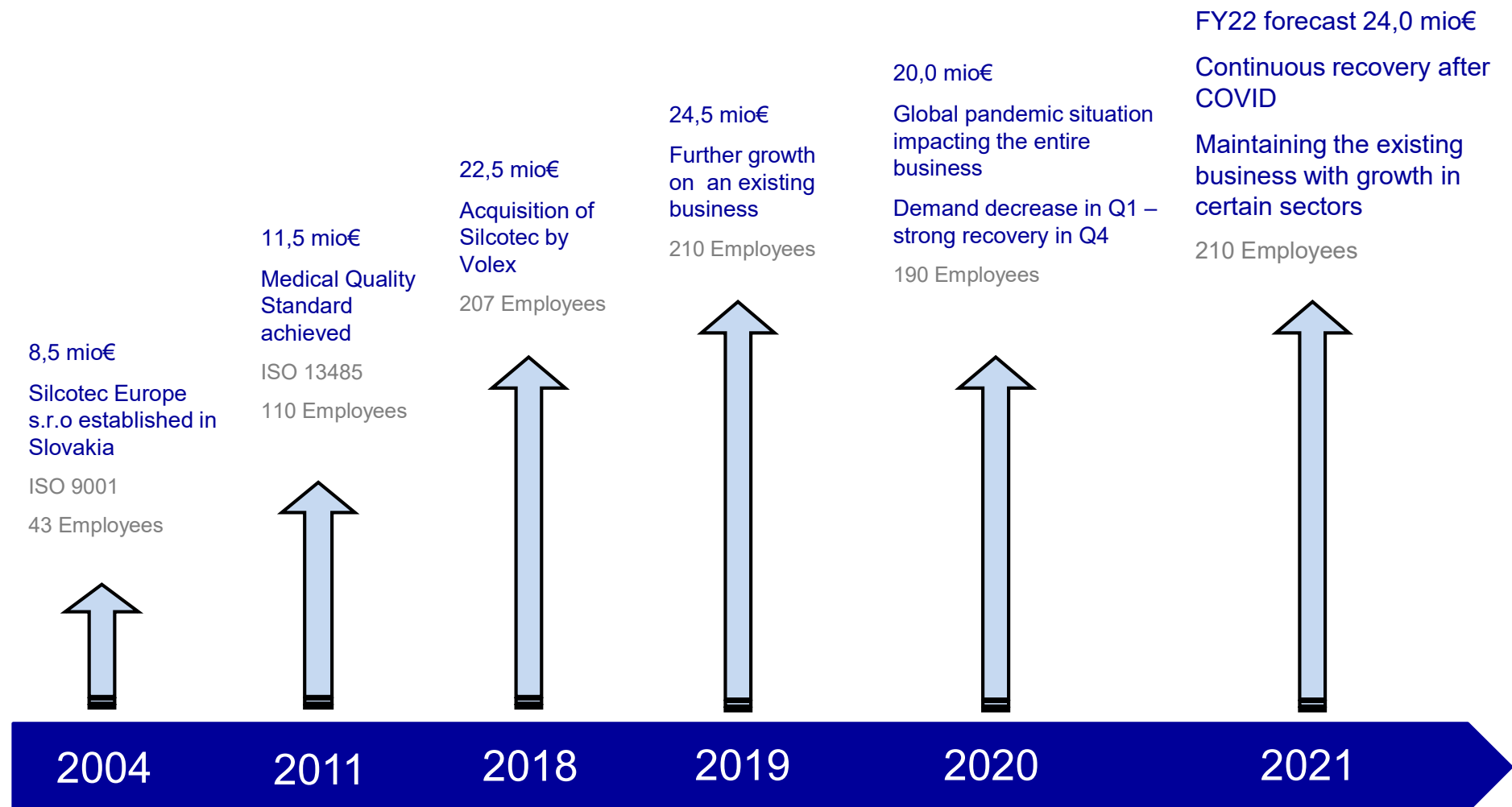
[www.silcoteceurope.com](http://www.silcoteceurope.com)



**Electronic interconnect and system integration supplier to high technology industries where ‘connections are critical’.**

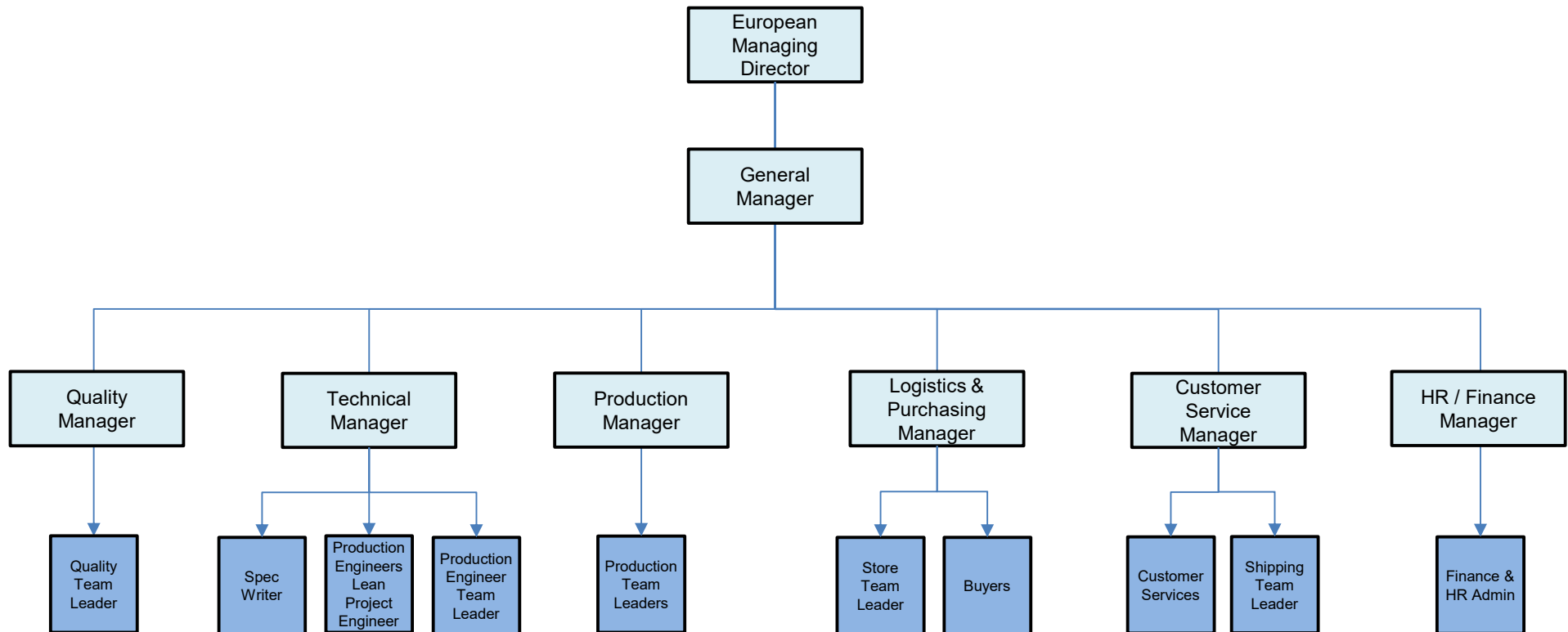
# Silcotec Europe milestone

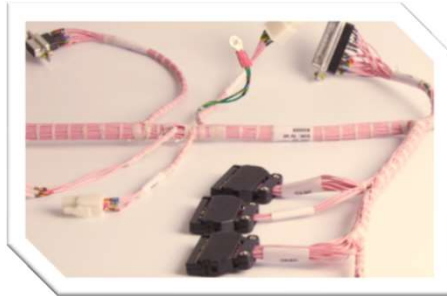
[www.silcotec europe.com](http://www.silcotec europe.com)



# Organisation structure

[www.silcoteceurope.com](http://www.silcoteceurope.com)





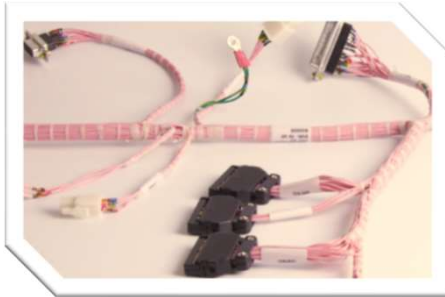
# Assembly Solutions



# Reliability



# Scalability



## Assembly Solutions

- Proven capability to supply high mix / low volume portfolios
- Dedicated NPI department for product transfer and introduction
- Design for manufacture technical capability in house



## Reliability

- KPI driven performance - confidence in Silcotec as a partner
- Proven performance on internal metrics and customer scorecards
- ISO:9001, 13485 and 14001 certified
- ATE testing and inspection to IPC620 standards



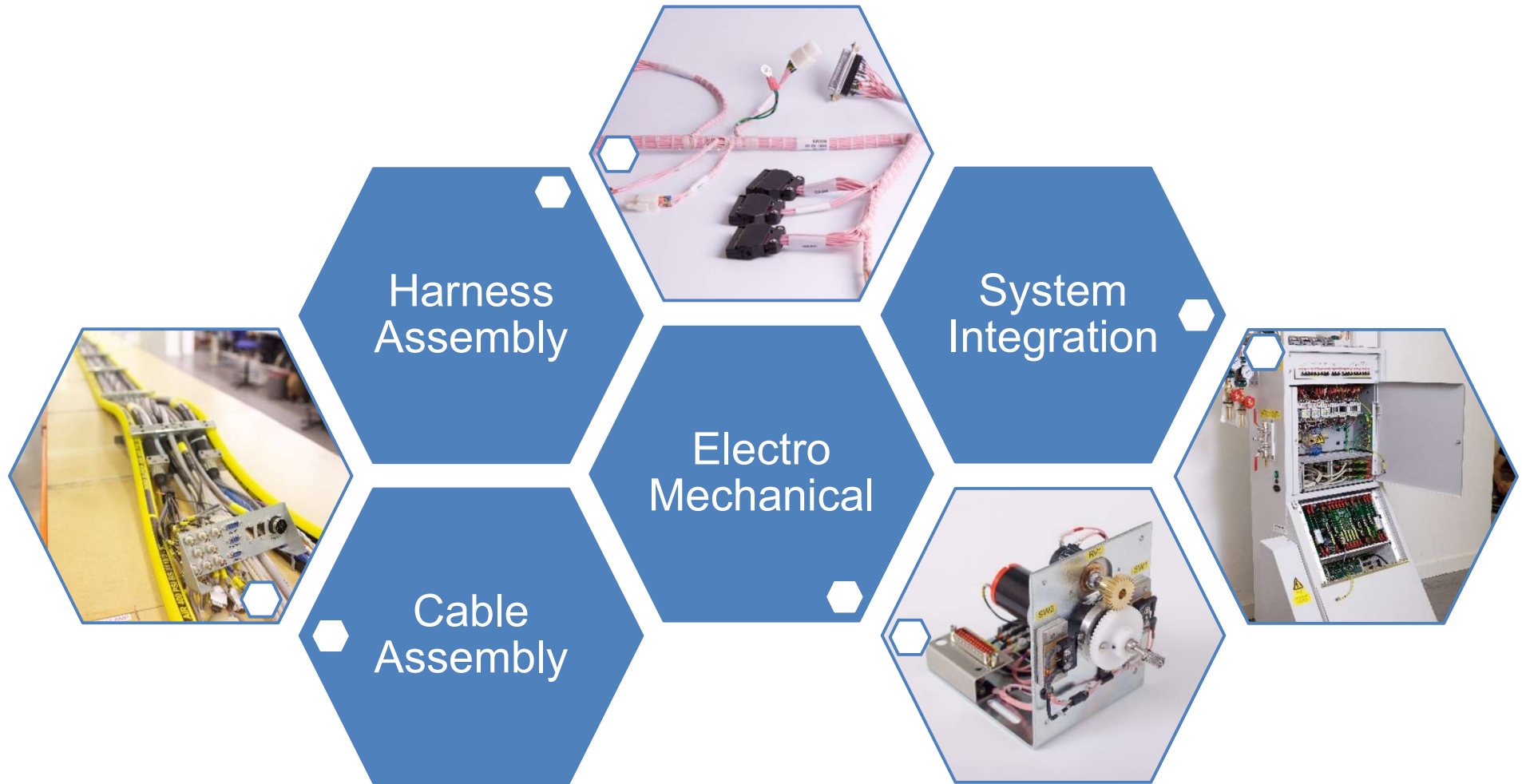
## Scalability

- Flexible capacity with local available skilled labour
- Transferable experience from working with leading OEMs
- 6,000 sq mts of manufacturing space (70% utilised)
- Custom fully integrated MRP system with continuous investment in business process integration



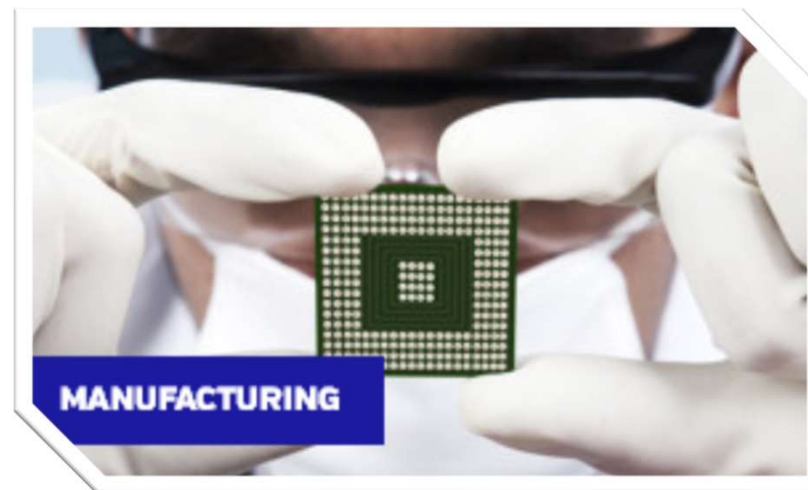
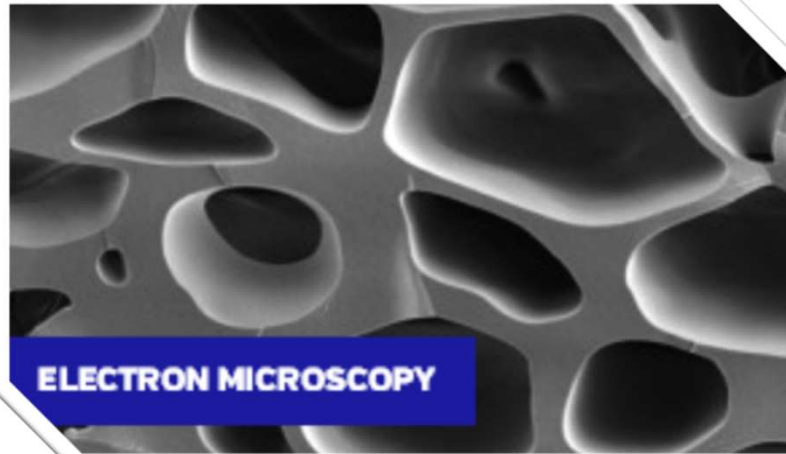
# Assembled quality products

[www.silcoteceurope.com](http://www.silcoteceurope.com)



# Focus on critical applications

[www.silcoteceurope.com](http://www.silcoteceurope.com)



# Focus on key accounts

[www.silcoteceurope.com](http://www.silcoteceurope.com)

 **Elekta**



**varian**



**ThermoFisher**  
SCIENTIFIC



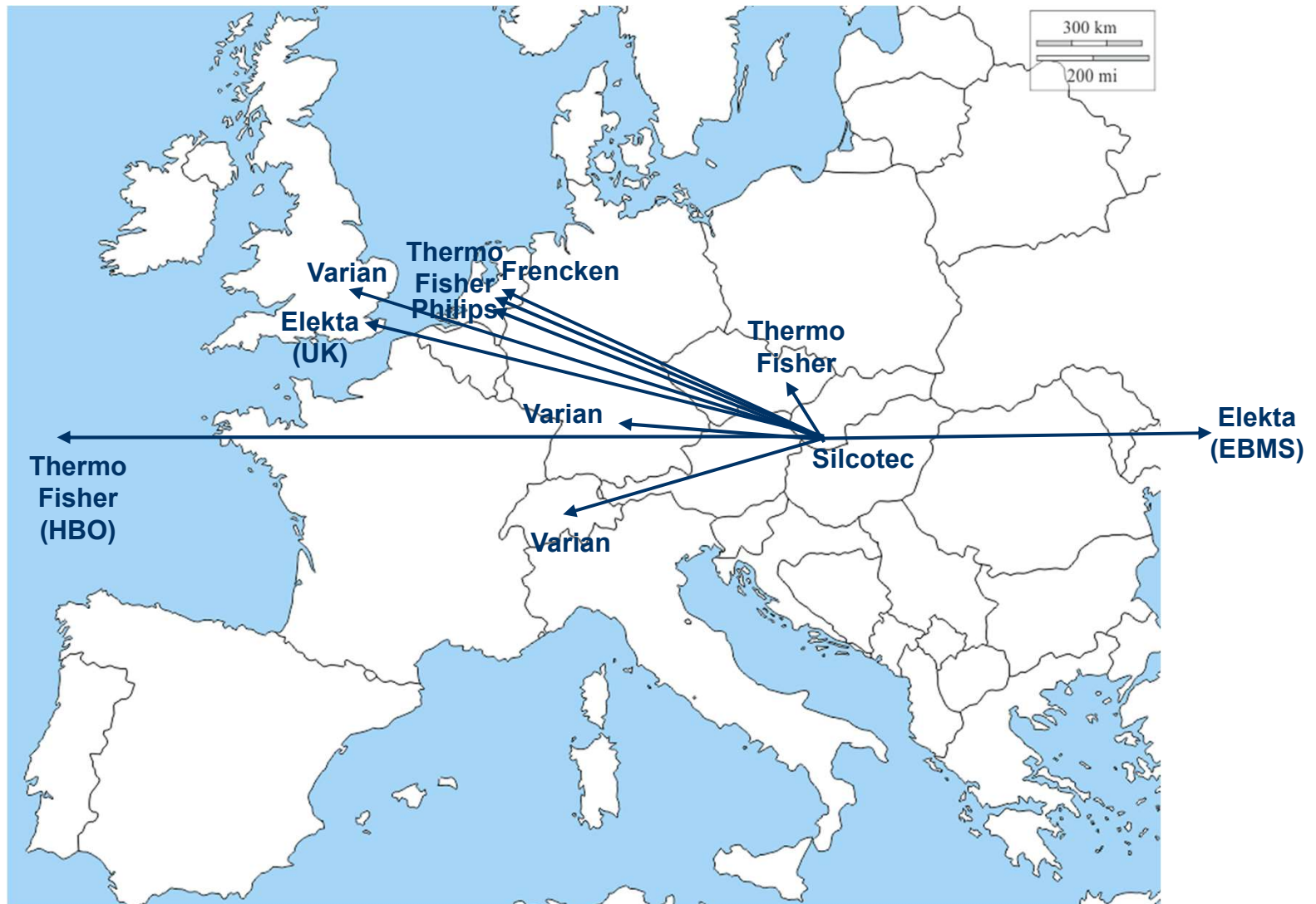
**PHILIPS**  
Healthcare



## Chosen outsource assembly partner for Global OEMs

# Locations of key accounts

[www.silcoteceurope.com](http://www.silcoteceurope.com)



# Proven quality performance

[www.silcoteceurope.com](http://www.silcoteceurope.com)

**Quality product and supply  
recognized and rewarded  
by Europe's major OEMs**



# Operational Facts and Figures

[www.silcoteceurope.com](http://www.silcoteceurope.com)

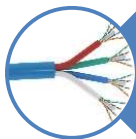
In 2020...



11,500 PO line shipments



356,000 individual items shipped



2.5 million meters of cable cut



4.0 million terminals crimped



6,000m<sup>2</sup> manufacturing space



9t of waste recycled

## Customer Intimacy

Understand our customers needs, making Silcotec an extension of their business

