



EIT Manufacturing Doctoral School INFO DAY



DOCTORAL
School

Lucia Ramundo – 09/03/2021

Recording of the info day is available at:

<https://web.microsoftstream.com/video/82877355-cc66-4480-97cd-acad6198d180>

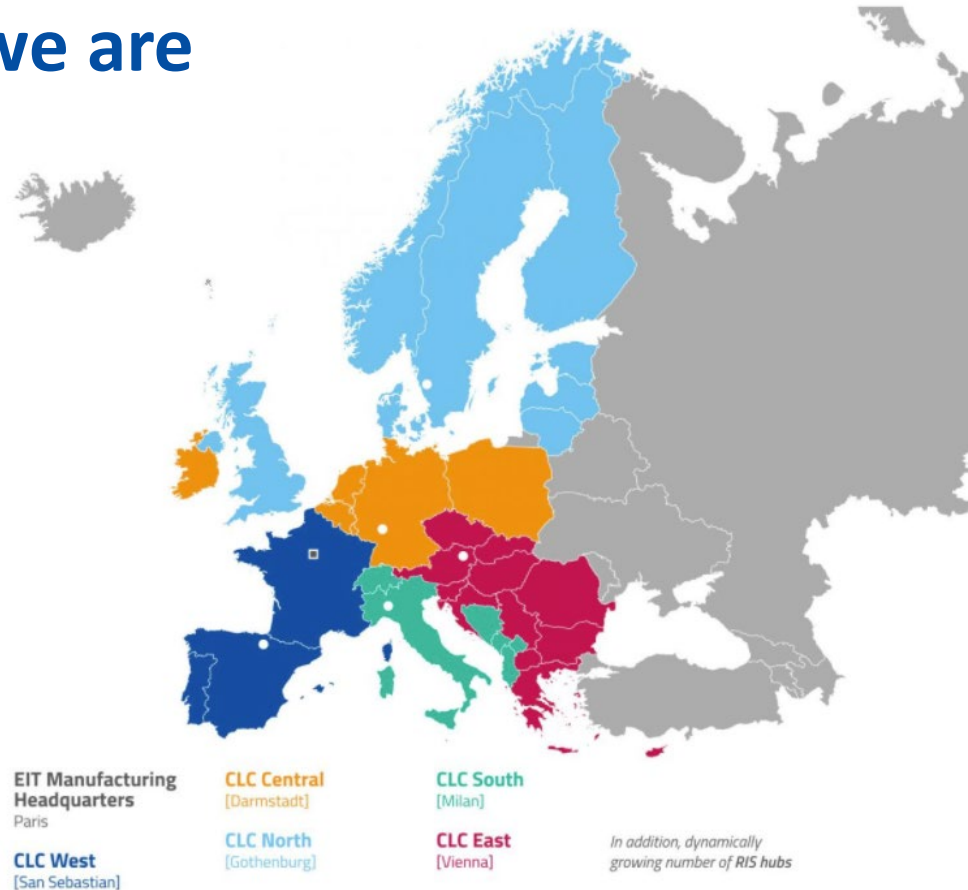
Content

1. EIT Manufacturing
2. EITM Doctoral School
3. EITM Doctoral School applications
4. Questions



EIT Manufacturing Who we are

- International association, part of the European Institute of Innovation & Technology (EIT)
- Innovation community made of EU universities, industries and research centers (> 60 partners)



EIT Manufacturing Vision and Mission

Our vision

Global manufacturing innovation is led by Europe.

Our mission

Bring the manufacturing actors of Europe together in innovation ecosystems that add unique value to European products, processes and services, while inspiring the creation of globally competitive and sustainable manufacturing.

EIT Manufacturing Vision and Mission

By bringing together the three sides of the **'knowledge triangle'**: business (large companies and SMEs), education institutions and research centres, we aim to increase the cooperation and integration between education, business and research.

We will connect:



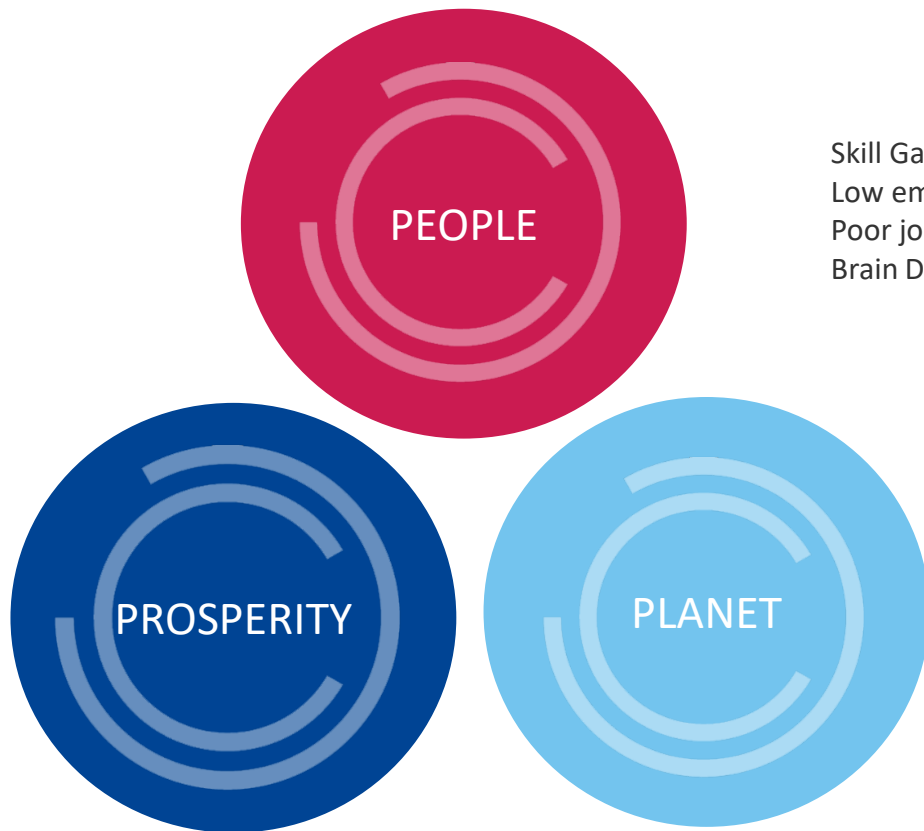
People with Skills

Technologies with
Markets

Innovators with
Investors

EIT Manufacturing Strategic Approach

The overarching challenges of manufacturing



Low competitiveness
Changing customer demands
Digital revolution
Exponential Technological Change
Fragmentation of Ecosystems
Low start-up survival

Skill Gaps
Low employability
Poor job attractiveness
Brain Drain

Resource scarcity
Manufacturing CO₂ and
NO_x emissions
Waste of resources

EIT Manufacturing Flagships



**Flexible Production
Systems for
Competitive
Manufacturing**



**Low Environmental
Footprint Systems &
Circular Economy for
Green Manufacturing**



**Digital & Collaborative
Solutions for
Innovative
Manufacturing
Ecosystems**



**Human-machine Co-
working for Socially
Sustainable
Manufacturing**

EIT Manufacturing Objectives & Programmes

STRATEGIC OBJECTIVES

1. **Competitive Manufacturing Skills & Social Sustainability**
2. **Powerful Manufacturing Innovation Ecosystems**
3. **Globally Competitive & Resilient Manufacturing**
4. **Environmentally Sustainable Manufacturing**
5. **Manufacturing fit for the Digital Age**



PROGRAMMES

Education	Empower Connect & Transform Engage
Innovation	Launch Develop & Stimulate Grow
Business Creation	Create Accelerate Transform
RIS	Mobilise & engage Empower local ecosystems

EIT Manufacturing Objectives & Programmes

STRATEGIC OBJECTIVES

1. Competitive Manufacturing Skills & Social Sustainability
2. Powerful Manufacturing Innovation Ecosystems
3. Globally Competitive & Resilient Manufacturing
4. Environmentally Sustainable Manufacturing
5. Manufacturing fit for the Digital Age



PROGRAMMES

Education

Empower
Connect & transform
Engage

Innovation

Launch
Develop & Stimulate
Grow

Business Creation

Create
Accelerate
Transform

RIS

Mobilise & engage
Empower local ecosystems

EITM Doctoral School – The vision

Researcher ideas
must become
innovations
used by people
to make the society more sustainable and ethic



EITM Doctoral School – The mission

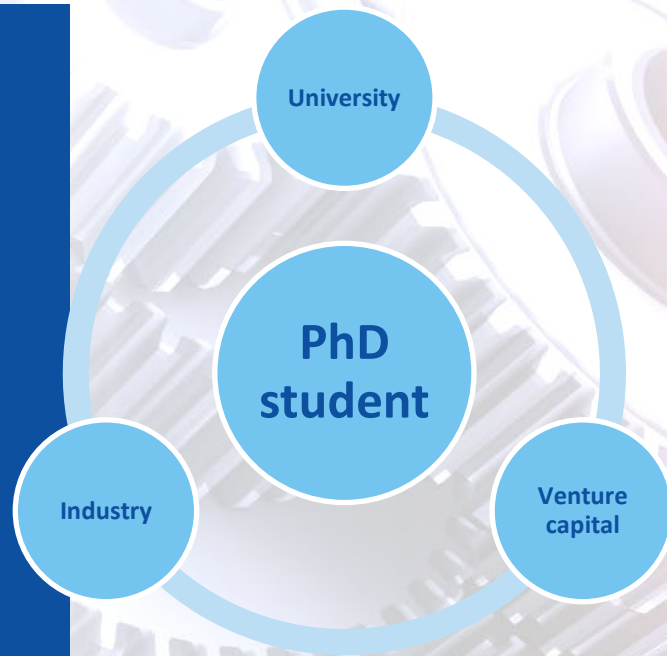
Empower Manufacturing PhD researchers with
Innovation and Entrepreneurship skills
to create
the manufacturing business of the future



This Photo by Unknown Author is licensed under CC BY-SA-NC

EITM Doctoral School – The objectives

- Teach innovation, entrepreneurship, creativity & leadership to researchers
- Link university research with industrial practice
- Connect researchers with venture capitals



EITM Doctoral School program

- 6 University partners.
- Industrial Doctorate position at one of the partner universities.
- 60 ECTS programme on top of scientific PhD studies.
- Minimum time to complete: 2 years

ECTS equivalence: 1 ECTS=25 hours



EITM Doctoral School program

- Programme structure:
 - Innovation & Entrepreneurship program (30 ECTS)
 - Compulsory mobility: international mobility (15 ECTS) and cross-sector mobility (15 ECTS).
- Mandatory I&E activities:
 - participation 1 summer/winter school
 - poster or oral presentation at the doctoral symposium
 - participation in 2-3 seminars about innovation and entrepreneurship in the frame of Manufacturing.
- Optional VENTURE programme inside the I&E one

ECTS equivalence: 1 ECTS=25 hours



Funded by the
European Union



EITM Doctoral School program

Tuition fee:

- 60 ECTS - Mandatory activities: FREE of CHARGE
- Optional activities: discounted fee

Financial support by EITM:

- Yearly mobility grant
- Subsistence scholarship during mobility
- Discounts for optional activities fees
- Possibility to deliver professional services



EITM Doctoral School quality assurance

Built on the framework of the



label

A unique brand of high quality education
which addresses business & societal needs



European Institute of
Innovation & Technology

The EIT is a body of the European Union



Manufacturing

Funded by the
European Union



EITM Doctoral School quality assurance : The EIT Label

5 quality criteria

- The EIT **Overarching Learning Outcomes** (EIT OLOs)
- Robust **entrepreneurship** education
- Highly integrated, **innovative** 'learning-by-doing' curricula
- **Mobility**, European dimension and openness to the world
- **Outreach** strategy and access policy

- **Creativity** skills and competences
- **Innovation** skills and competences
- **Entrepreneurship** skills and competences
- **Research** skills and competences
- **Leadership** skills and competences
- **Intellectual transforming**
- **Making value judgements**

Next generation of
entrepreneurs, innovators
and change agents

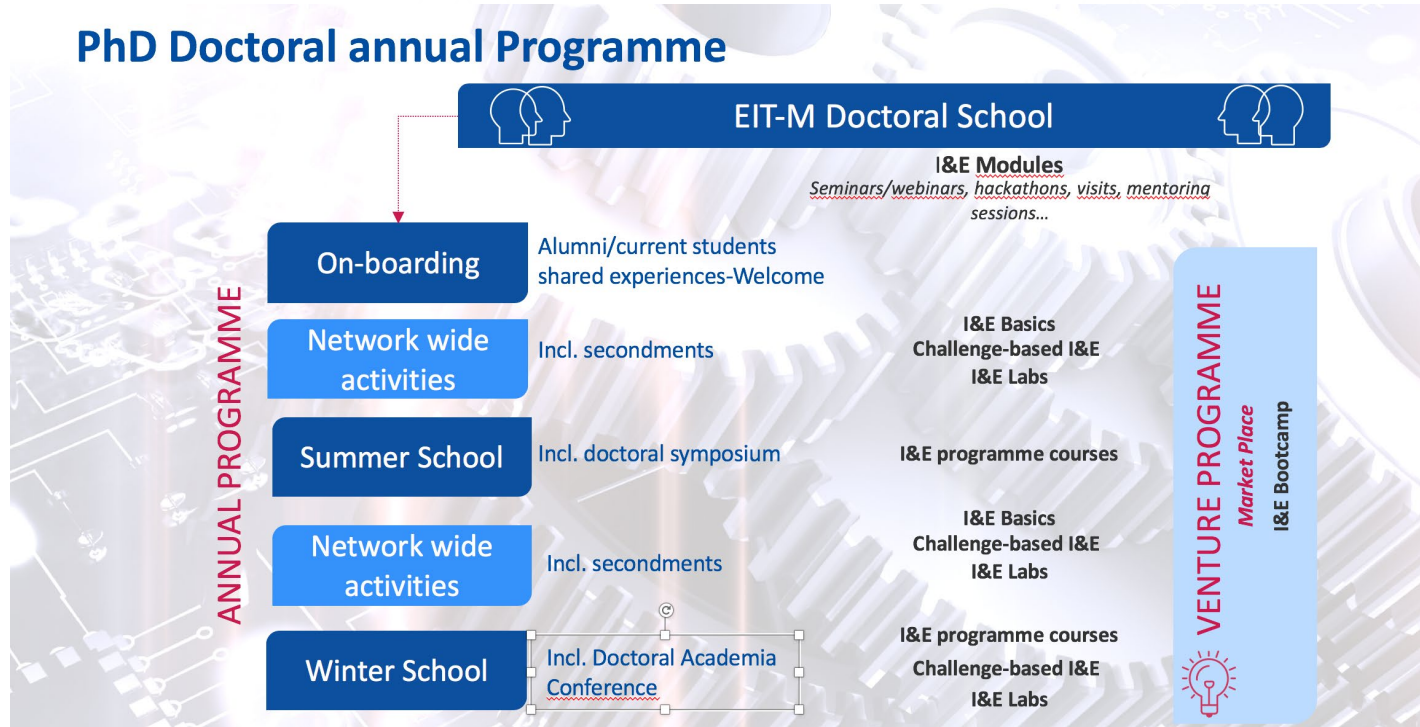


Source: EIT

DS - Industrial challenge-based PhD thesis



DS – Innovation & Entrepreneurship (I&E) programme



DS – Innovation & Entrepreneurship (I&E) programme

- **Seminars and Webinars** series – I&E Basics (10 ECTS)
- **Hackathons** – Challenge-based I&E (4 ECTS)
- **Summer and Winter Schools** – I&E programme courses (7 ECTS)
- **Visits** to companies, clusters and incubators – I&E Labs for Business Development (2 ECTS)
- **Venture Journey** – I&E Bootcamp (7 ECTS)

DS - International Dimension – 15 ECTS



DS – Cross-organizational dimension - 15 ECTS



DS – Learning by Doing approach



Creativity

Entrepreneurship



Research

Innovation

Leadership



DS - Venture Capital program



DS - EIT Manufacturing students community!



Get the EIT Manufacturing PhD labeled certificate!



EIT Manufacturing is supported by the EIT,
a body of the European Union

EIT PhD Label Certificate

Zayyan McIntyre

has successfully completed the
**EIT Manufacturing Doctoral
School programme**

The EIT Manufacturing Doctoral school provides
research activity combined with innovation and
entrepreneurship preparation inside the
Manufacturing landscape

Klaus Beetz
EIT Manufacturing
Chief Executive Officer

A handwritten signature in blue ink, appearing to read 'K. Beetz'.

Paola Fantini
EIT Manufacturing
Education Director

A handwritten signature in blue ink, appearing to read 'Paola Fantini'.



Manufacturing

Funded by the
European Union



Be part of EIT Manufacturing wide community!



Use networking for Job & Business opportunities



Transform your research results into a startup!



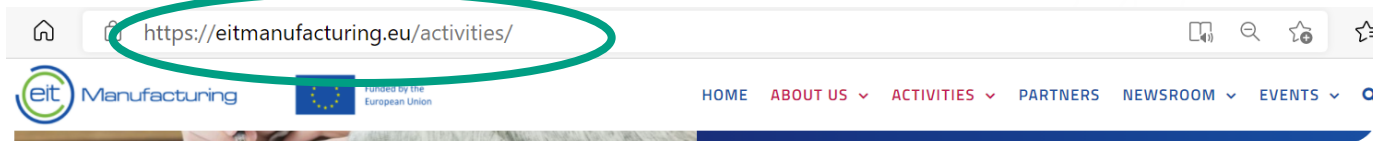
DS – When and How to apply?

1. You have first to be enrolled into a PhD position at one of the 6 partner universities
2. Students must have MINIMUM 2 years of PhD studies time left
3. Applications are open all year round with three main windows
4. Selections are done twice a year:
 - 29 March 2021 => for applications done by 25 March 2021
 - 29 September 2021 => for applications done by 25 September 2021
 - 28 January 2022 => for applications done after 25 September 2021
5. Students enrol right after each selection period
6. Students can re-apply in future, if not selected
7. All students are eligible for financial support. No need to present a request

DS – How to apply

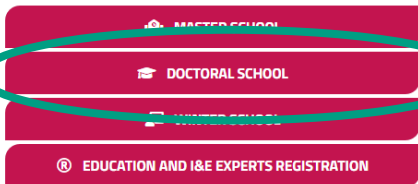
**Doctoral program:
How to apply!**

DS – How to apply



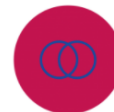
Empower programme

- Bachelor/ Master/ PhD programmes, which aim at skilling young pupils and students.
- Professional trainings at and around workplace, by upskilling professionals as well as reskilling people for new tasks and professions in future manufacturing.



Connect programme

- Create the Guided Learning Platform (GLP), the most ambitious learning platform in the manufacturing sector. It combines learning-related facilities, open access to digital learning content and tailor-made learning paths.
- Create Digital Learning Nuggets, module combinations tailored to each individual learner's journey.
- Interact with Learning/Teaching Factories, by interlinking learners to each other, facilities and content.



Engage programme

- Engage Society, to provide opportunities and get first-hand impressions of industrial and research establishments.
- Engage Pupils, the young talents that are vital as future workforce.
- Cross-Industry Engagement, to promote fertilisation and networking across industries and to establish communities of practice.



Funded by the
European Union



DS – How to apply

<https://eitmanufacturing.eu/activities/eit-manufacturing-doctoral-school/>



Funded by the
European Union

HOME ABOUT US ▼ ACTIVITIES ▼ PARTNERS NEWSROOM ▼

EIT Manufacturing Doctoral School

You can apply to the EIT Manufacturing School directly [HERE](#)



Funded by the
European Union



DS – How to apply

<https://eitmanufacturing.eu/activities/eit-manufacturing-doctoral-school/>



Funded by the
European Union

HOME ABOUT US ▼ ACTIVITIES ▼ PARTNERS NEWSROOM ▼

EIT Manufacturing Doctoral School

You can apply to the EIT Manufacturing School directly [HERE](#)



Funded by the
European Union



DS – How to apply

The screenshot shows the website <https://apply-ds.eitmanufacturing.eu>. The URL bar is circled in red. The website features a green sidebar on the left with the EIT Manufacturing logo and navigation links: 'Browse programmes', 'About us', 'More information', and 'Contact us'. The main content area has a header with the 'DOCTORAL School' logo and a large banner for 'EIT MANUFACTURING' with the tagline 'Global manufacturing Innovation will be led by Europe'. A green button in the banner says 'Browse the programmes and apply!'. Below the banner, the 'Browse Programmes' section is circled in red, showing the 'Doctoral' category and the 'EIT Manufacturing Doctoral School Programme' with a sub-item 'Doctoral, full-time'.

← → ↻ 🏠 <https://apply-ds.eitmanufacturing.eu> 🔍

EIT Manufacturing
Funded by the European Union

🔍 Browse programmes
📁 About us
More information
Contact us

High contrast mode
Cookie preferences
Admin login

DOCTORAL School

EIT MANUFACTURING
Global manufacturing Innovation will be led by Europe

Browse the programmes and apply!

Browse Programmes
Doctoral
EIT Manufacturing Doctoral School Programme
● Doctoral, full-time

EITM Doctoral School – The benefits for employability

- Industrial experience related to PhD studies
- International network of professional contacts beside the scientific one
- A better understanding of different contexts and working methods
- Systemic view of technology and societal challenges sustainability
- Advanced Soft skills development
- Business skills development
- Knowledge how to create a start-up and attract venture capitals



EITM Doctoral School **Impacts**

We expect EITM Doctoral School graduates to become key players of the EIT Manufacturing world change

GOALS BY 2030



Create and support **1000** start-ups



50 000 people trained and up- or re-skilled



60% of manufacturing companies adopt sustainable production practices



Create **360** new solutions



EUR 325 million investment attracted by EIT Ventures



30% of material use is circular

Questions?



Thank you